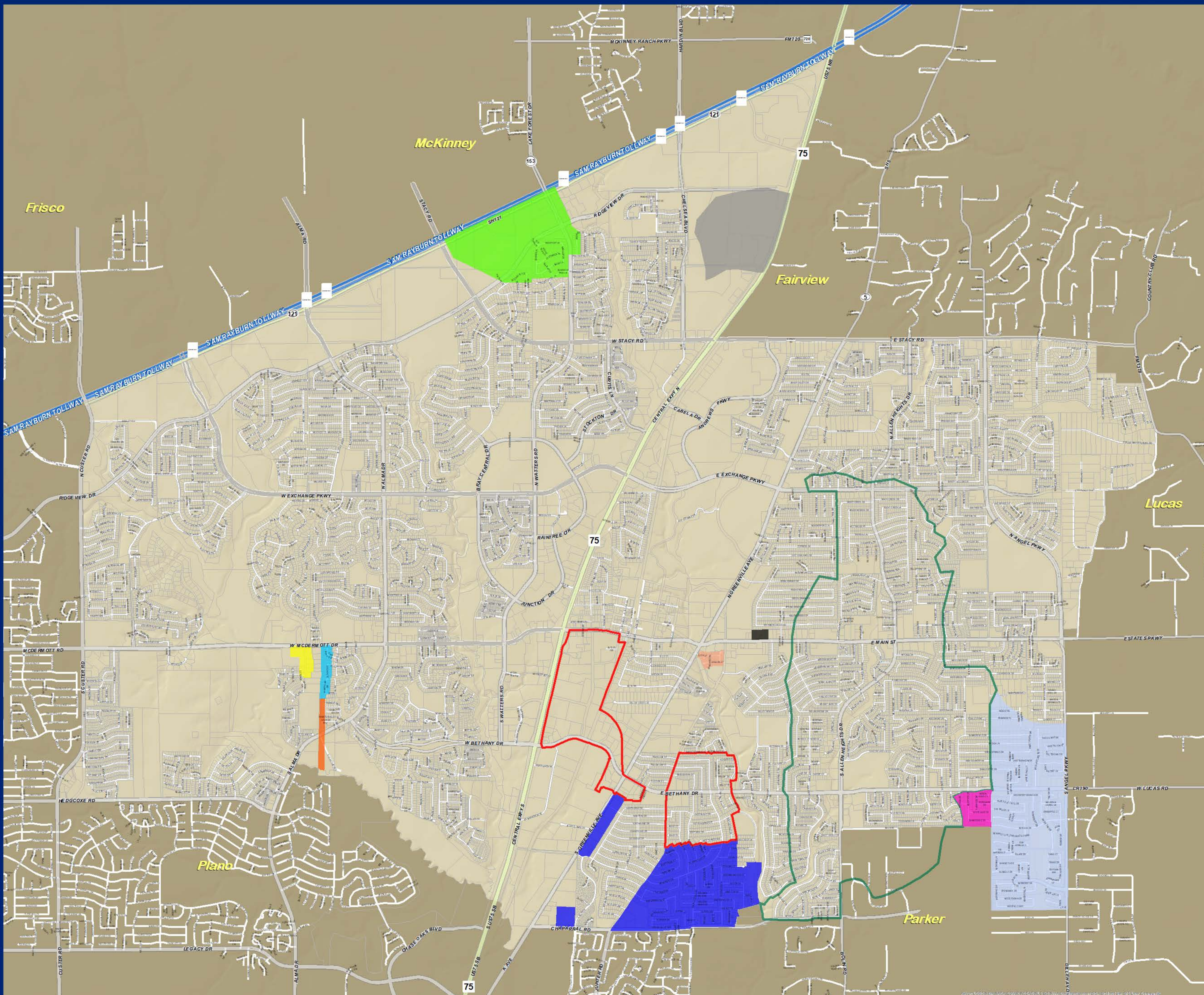


- PRO-RATA MAP LEGEND -

- ORDINANCE: #389-5-82 Expired**
Base Area \$318.14 per acre
Exhibit B Expansion Area: \$464.53 per acre
- ORDINANCE: #336-4-81 20 years Expired**
EAST SIDE INTERCEPTOR
(Contiguous to Line) \$19.87 per linear foot of the line located within the property being developed, plus \$81.22 per acre being developed(not contiguous)
- ORDINANCE: #447-8-83**
CITY OF ALLEN
\$1,000.00 per lot
- ORDINANCE: #607-5-85**
COLLIN SQUARE
(Sewer Line and Lift Station) \$738.98 per acre
(Sewer Line only) \$409.23 per acre
- ORDINANCE: #1547-11-97**
COLLIN SQUARE
(Sewer Line) \$15.95 per linear foot for each linear foot of property being developed east & west of and adjacent to Sun creek Blvd.
- ORDINANCE: #1721-5-99**
SOWELL
(Force Main) \$217.14 per acre
- ORDINANCE: #1721-5-99**
SOWELL
(Metering Station) \$207.20 per acre
- ORDINANCE: #1810-3-00(R)**
TURRENTINE JACKSON & MORROW 8" Sewer Line
(Sewer Line) \$534.60 per acre
- ORDINANCE: #1517-8-97**
(Sewer Line) East of Tatum Dr. between McDermott Dr. and the Watters Crossing III property line \$15.76 per linear feet
- ORDINANCE: #1517-8-97**
(Sewer Line) Continuous to both sides Tatum Dr. south of Watters Crossing III property line for 2,585 feet \$217.14 per linear feet
- ORDINANCE: #2077-8-02**
(Offsite Sewer) 217 acres, \$800.13 per acre
- JUPITER SEWER REPLACEMENT**
\$55.00 per linear feet along Jupiter Rd. and property Line with Victoria Garden



CITY OF ALLEN

ENGINEERING DEPARTMENT

MASTER SEWER PLAN

DISCLAIMER:
This map product was prepared from a Geographic Information System established by the City of Allen. Its employees, agents and personnel make no warranty as to the accuracy and/or timeliness of the data, dimensions, contours, property boundaries, or placement or location of any map features shown. The City of Allen, its employees, agents and personnel MAKE NO WARRANTY OF MERCHANTABILITY OR FITNESS FOR USE FOR ANY PARTICULAR PURPOSE EXPRESS OR IMPLIED WITH RESPECT TO THIS MAP PRODUCT. Independent verification of all data contained on this map product should be obtained by the user of the map.

DATA SOURCES:
City of Allen, WCTCOID, GAIN CAD, Collin County, FEMA, USGS, NIMS, AISC under GIS Center Bureau.

PROJECTION COORDINATE SYSTEMS:
NAD 1983 (North), State Plane North Central Texas FIPS 4202.

VERTICAL CURVATURE:
City of Allen, January 2007, 2-foot elevation contours must be used for 3-foot horizontal contours. A 5-foot of vertical clearance must be maintained above the top of the pipe. DBM must be located at 5-meters. DBM Point Accuracy at 15-18 vertical. DBM Format ASC.

NOTES:
For detail, consult an earlier map or utility plan, please log on to www.cityofallen.org/Utilities/Information/Systems/DBM

0012427 Department of Community Development Geographic Information Systems (GIS)
(214) 308-4166 or (214) 308-4167 rfong@cityofallen.org



Information Technology - GIS
Date Map Saved: 8/30/2018
Map Saved by: rfong