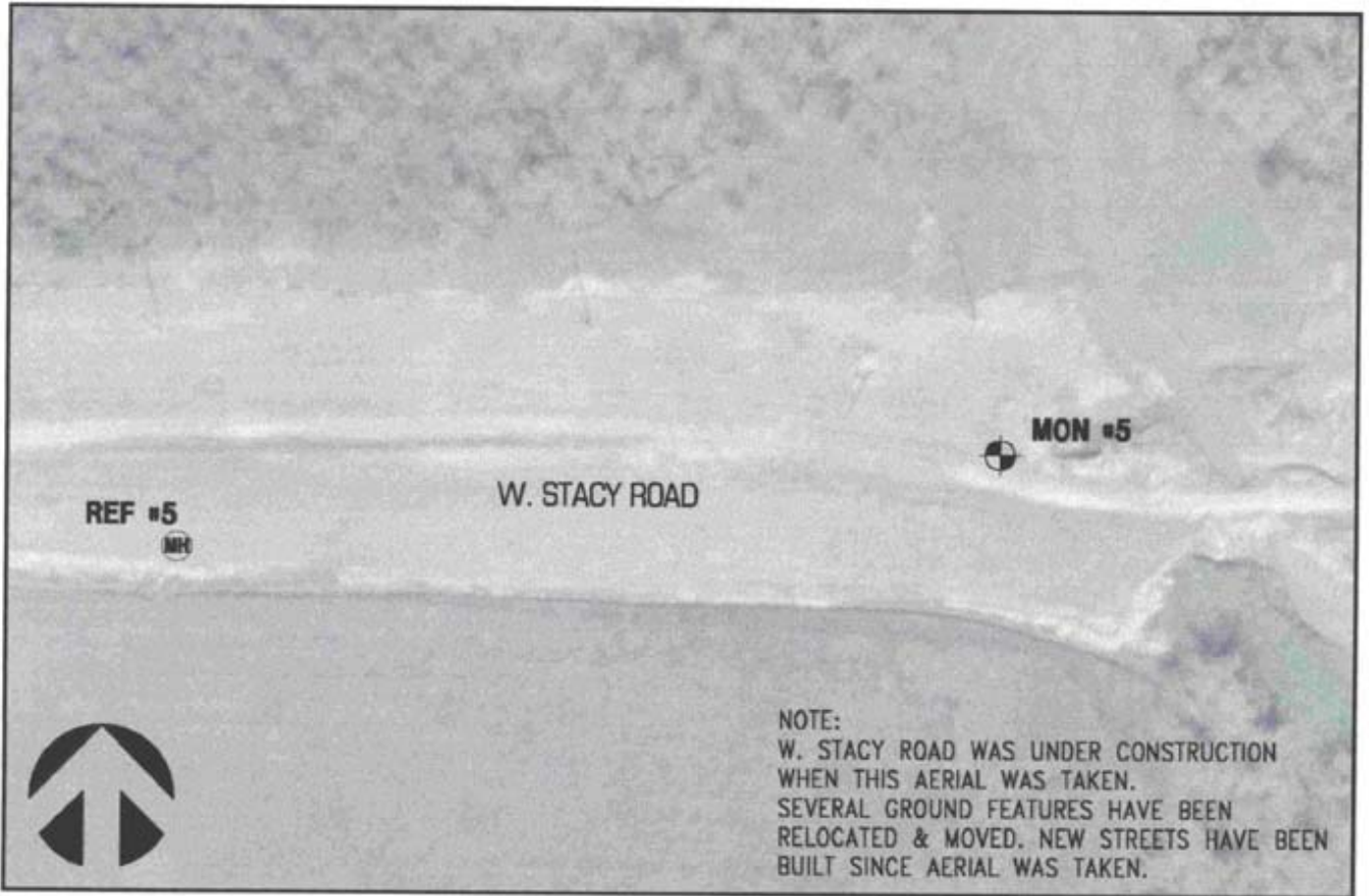




CITY OF ALLEN
GEODETIC MONUMENTATION



SCALE 1"=100'

(AERIAL PROVIDED BY THE CITY OF ALLEN, 2001 AERIAL PHOTO)

COORDINATE SYSTEM: TEXAS NORTH CENTRAL IZONE 4202

MONUMENT NO. 5

STATION DESCRIPTION:

3-1/2" ALUMINUM DISK SET IN CONCRETE IN WEST END OF BRIDGE IN MEDIAN, LOCATED 1,020'± EAST FROM THE INTERSECTION OF CURTIS LANE AND STACY ROAD.

Datum: NAD83 / NAVD88				
NORTHING	7098857.21100	ft.	2163736.0054	m.
EASTING	2528659.05700	ft.	770736.8221	m.
ELEVATION	661.74		201.70	

Datum: NAD27 / NGVD29				
NORTHING	533255.92375	ft.	162536.7323	m.
EASTING	2254158.10153	ft.	687068.7703	m.
ELEVATION	661.80		201.71	

LATITUDE	33°07'47.76134"N
LONGITUDE	96°40'14.21816"W

REFERENCE NO. 5

STATION DESCRIPTION:

CENTER OF MANHOLE LID ON STORM CURB INLET, LOCATED 740'± EAST FROM THE INTERSECTION OF CURTIS LANE AND STACY ROAD, ON THE SOUTH SIDE OF STACY ROAD.

Datum: NAD83 / NAVD88				
NORTHING	7098807.64300	ft.	2163720.8970	m.
EASTING	2528232.16100	ft.	770606.704	m.
ELEVATION	659.08		200.89	

Datum: NAD27 / NGVD29				
NORTHING	533210.41790	ft.	162522.8621	m.
EASTING	2253730.76133	ft.	686938.5168	m.
ELEVATION	659.14		200.91	

LATITUDE	33°07'47.27120"N
LONGITUDE	96°40'19.23798"W